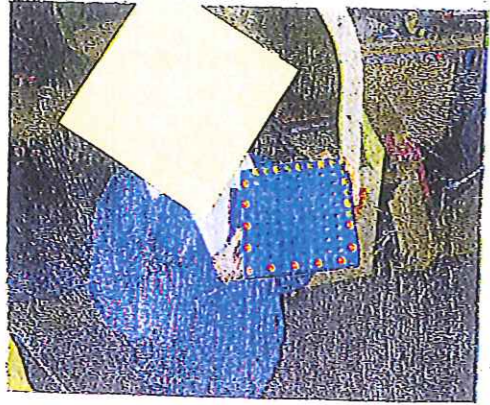
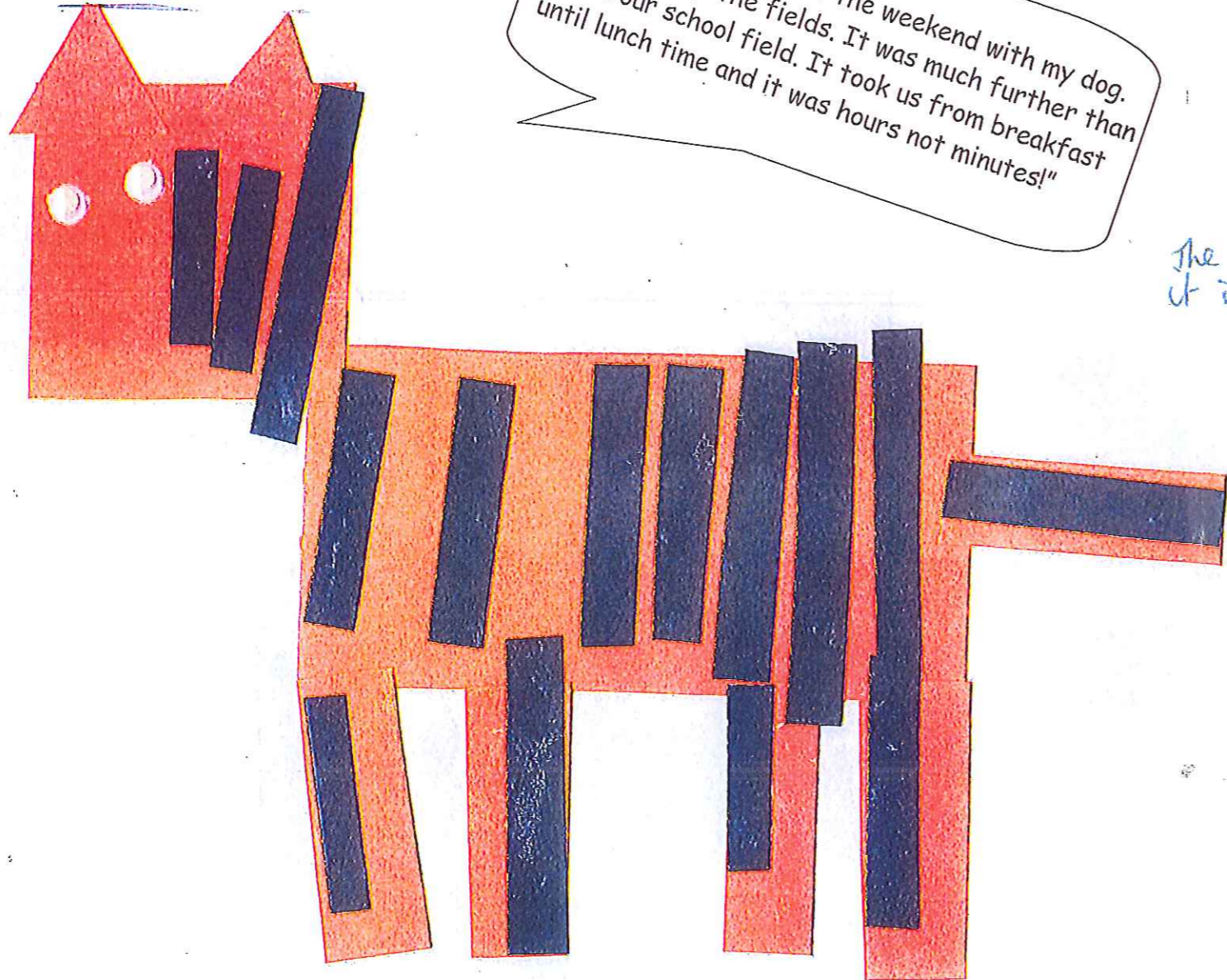


Characteristics of Effective Learning

R is a highly enthusiastic learner who really enjoys finding out about objects, events and people. She is curious about the world around her and likes trying new activities. Romilly initiates activities and actively seeks challenges. She enjoys planning and making decisions about how to complete a task as well as finding ways to solve problems. She will persist with activities even when there is a challenge and demonstrates high levels of perseverance which ensure she is not easily distracted and will maintain her focus on tasks for long periods of time.



Look Mrs Keith, a pattern!



"I walked a long way at the weekend with my dog. It was across the fields. It was much further than round our school field. It took us from breakfast until lunch time and it was hours not minutes!"

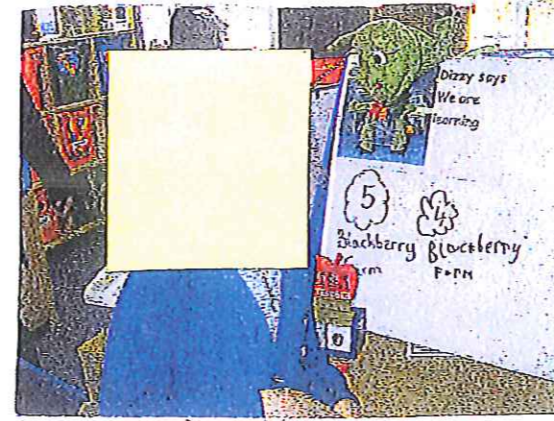
Shape, Space and Measure

Child R

Judgement: Expected

25.1.13

Look if balances, I've put one on one and one on the other. Now I've put more stuff on here and it's the heaviest, that is the lightest, I didn't put more stuff on that. Using scales.



"Mrs Keith I've changed it because today there is only 4 days!  
R changed our countdown for our school trip!"

PSE	CL	PD	L	M	UW	EAD										
MR	SC	MFB	LA	U	S	MH	HSC	R	W	N	SM	PC	W	T	MM	BI

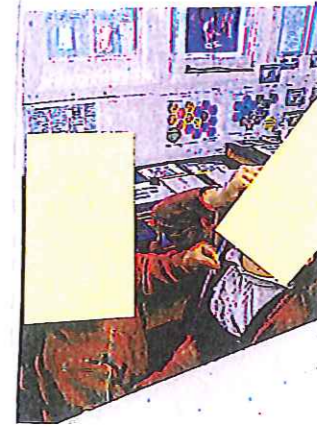
Using the tape measure to measure her friend.  
'You are bigger than me'

'I need a circle for the head'  
'I've used 6 rectangles and two triangles and one square'

29.01.13

'Leo's is heavier than mine.'

The body is a line, it is a cuboid.



'rectangles' 'flat shapes' 'actually 3D shapes, a cuboid.'

Role Play - Baker's shop:  
"The buns were 5p each and I only had 2p in my purse. I bought a cake instead. K had more than me - she had 10p"

"This side has lots in it's the heaviest, that is the lightest now." Playing with scales and blocks.

Adult Focus

We are learning to recognise, name and describe 2d shapes.